

**INDUSTRIAL
FOR LEASE**

6,000 SF -
12,000 SF

1.6 ACRES

WAREHOUSE

636 COUNTY ROAD 4841

HASLET, TX 76052 | WISE COUNTY

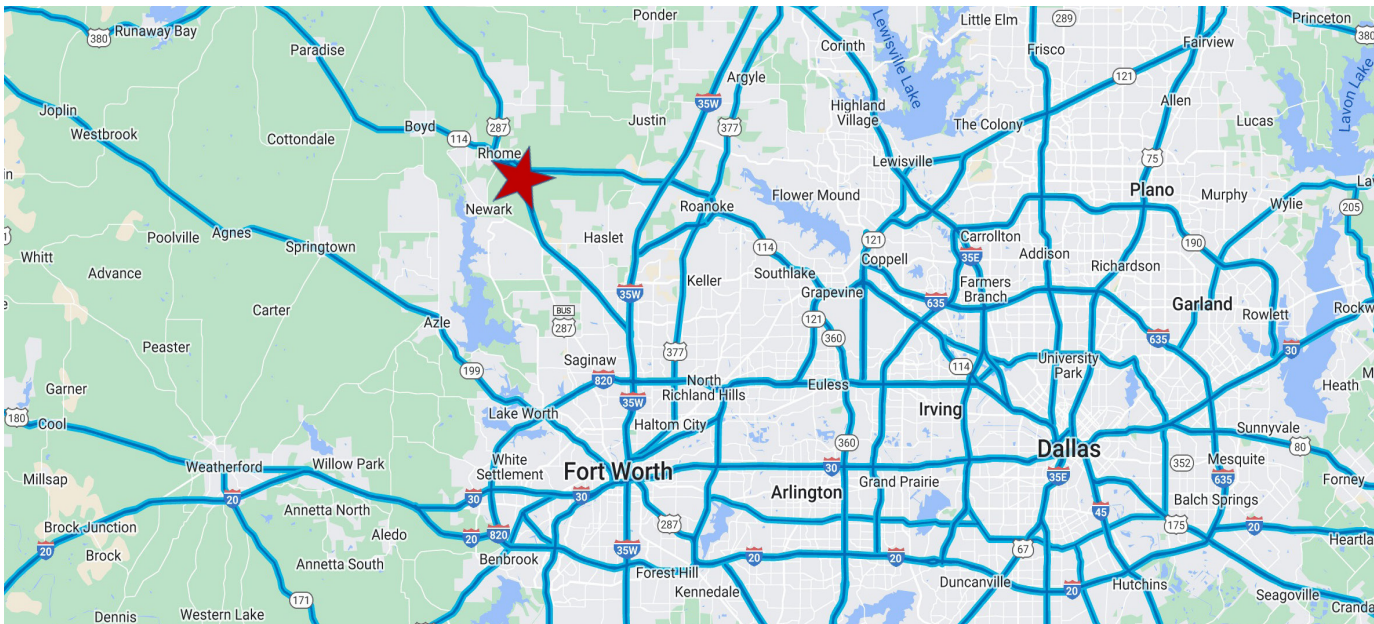
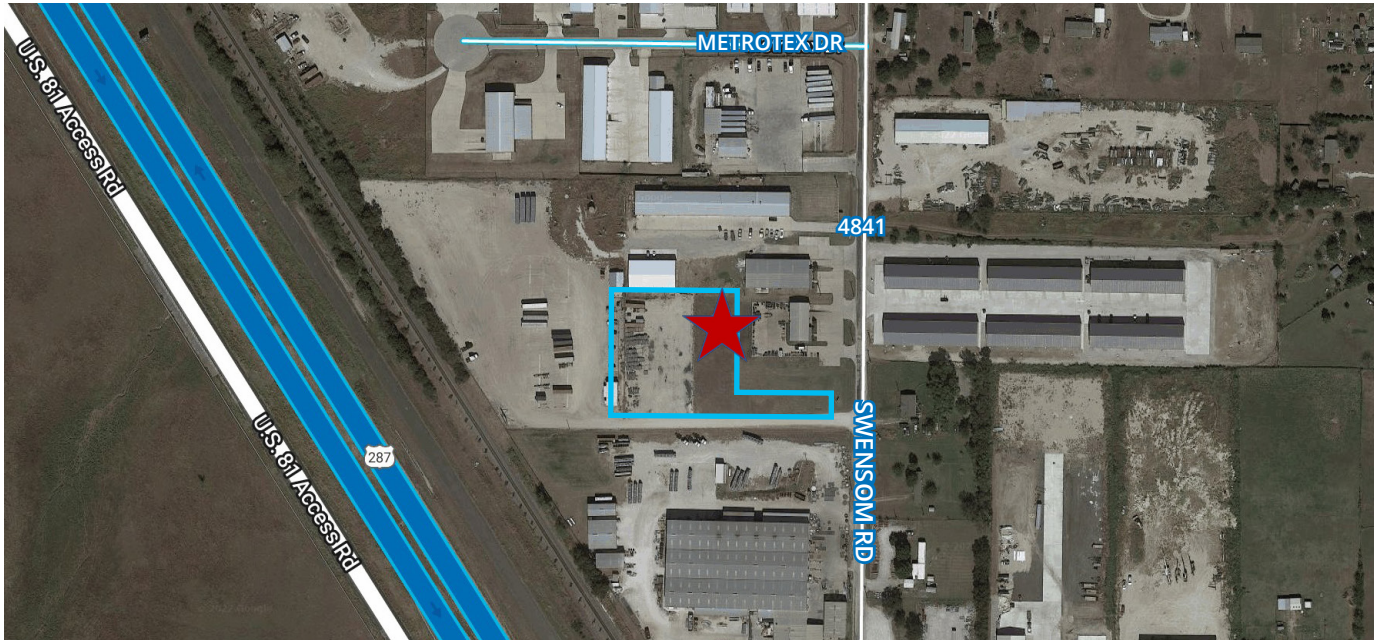


Property Information:

- 6,000 SF - 12,000 SF
- 225 SF Office
- Land SF: 69,696 SF | 1.6 Acres
- 16' Clear Height
- Twelve (12) Grade Level Doors
- Outside Storage
- Power 220 Volt / 3 phase
- Located between E HWY 114 & NW HWY 287
- **Lease Rate:** \$10.00 PSF / Industrial Gross

636 COUNTY ROAD 4841

HASLET, TX 76052 | WISE COUNTY



636 COUNTY ROAD 4841

HASLET, TX 76052 | WISE COUNTY

FLOORPLAN

